

**60,000  
students**

spread over  
campuses located in

**2 metropolises,  
11 towns and  
cities**



**over 250 facilities**



**over 7,100 academic and  
administrative staff**



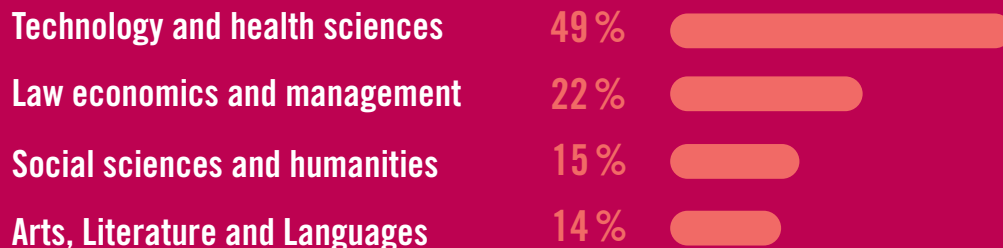
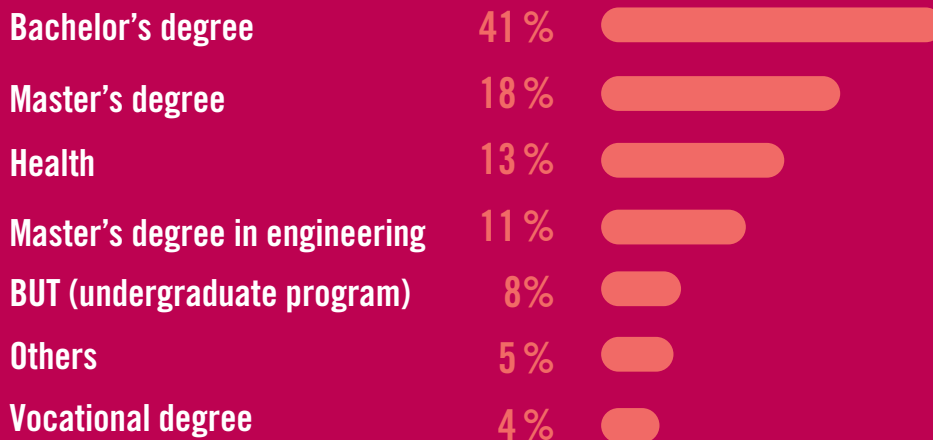
**€682 M budget**

# PROGRAMS BY ENROLMENT



**60,000**  
students

More than **8,200** students in lifelong learning programs / **400** enrolments for DAEU / **3,816** apprentices / **212** professionalisation contracts



# PROFESSIONAL INSERTION



## INSERTION RATE after

a vocational degree	92 %	<div></div>
a master's degree	91 %	<div></div>
a master's degree in engineering	98 %	<div></div>
a PhD	92%	<div></div>



## AVERAGE MONTHLY SALARY after

a vocational degree	€1 870	<div></div>
a master's degree	€2 256	<div></div>
a master's degree in engineering	€2 650	<div></div>
a PhD	€3 015	<div></div>

# A UNIVERSITY THAT PROMOTES ENTREPRENEURSHIP



**517**

students-entrepreneurs  
assisted

**1<sup>st</sup>**

**UNIVERSITY**  
in France in terms of  
entrepreneurship

**6,951**

**STUDENTS**  
are made aware of  
entrepreneurship

**OVER 90 STUDENTS**

have developed an activity (business  
creation or takeover, association...)

**93**

**AWARDS WON**

in local, regional or national scale  
for a total amount of

**€115,000**



# RESEARCH



**over 4,000**  
ACADEMIC AND  
RESEACH STAFF



**3,400**  
NEW PUBLICATIONS



**over 1,900**  
PHD STUDENTS



**386** THESIS defended  
including **47** joint PhDs  
with partner universities



**60** RESEARCH UNITS  
including  
**28** JOINT UNITS



**over 220**  
PATENT FAMILIES



**10** SCIENTIFICS CENTERS



**67** BRANDS and  
**170** SOFTWARES



**8** DOCTORAL SCHOOLS



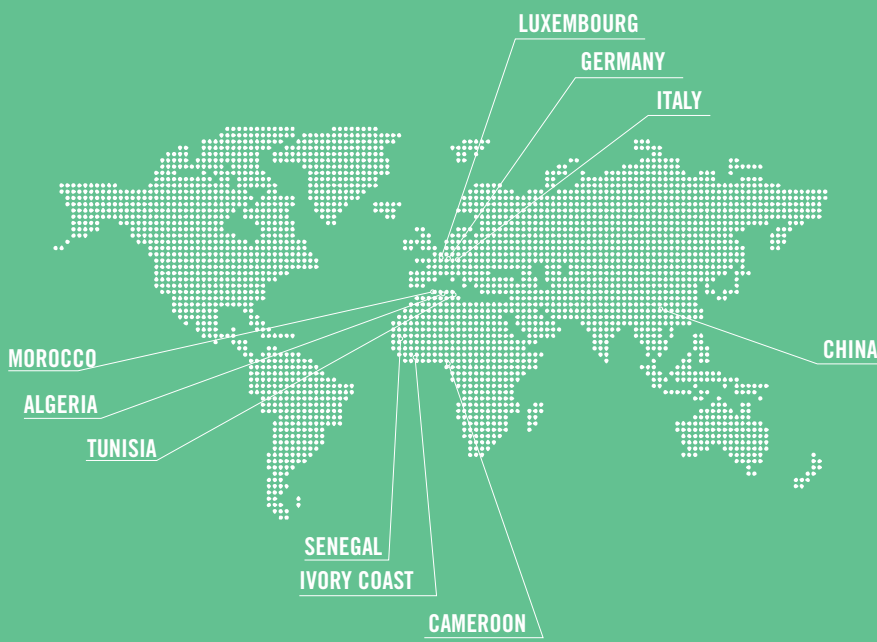
**5** STARTUPS created in 2022

# INTERNATIONAL



**over 9,500**  
international STUDENTS  
(1 in 6)

## Top 10 represented nationalities



## Erasmus + mobility

**93** outgoing STAFF  
**1,035** outgoing STUDENTS

## mobility outside the Erasmus program

**402** outgoing STUDENTS

**45 %** international PhD  
STUDENTS

over **500** RESEARCHERS  
welcomed by Euraxess  
services of Metz and Nancy

**470** HOSTING  
AGREEMENTS

# UniGR GROUP



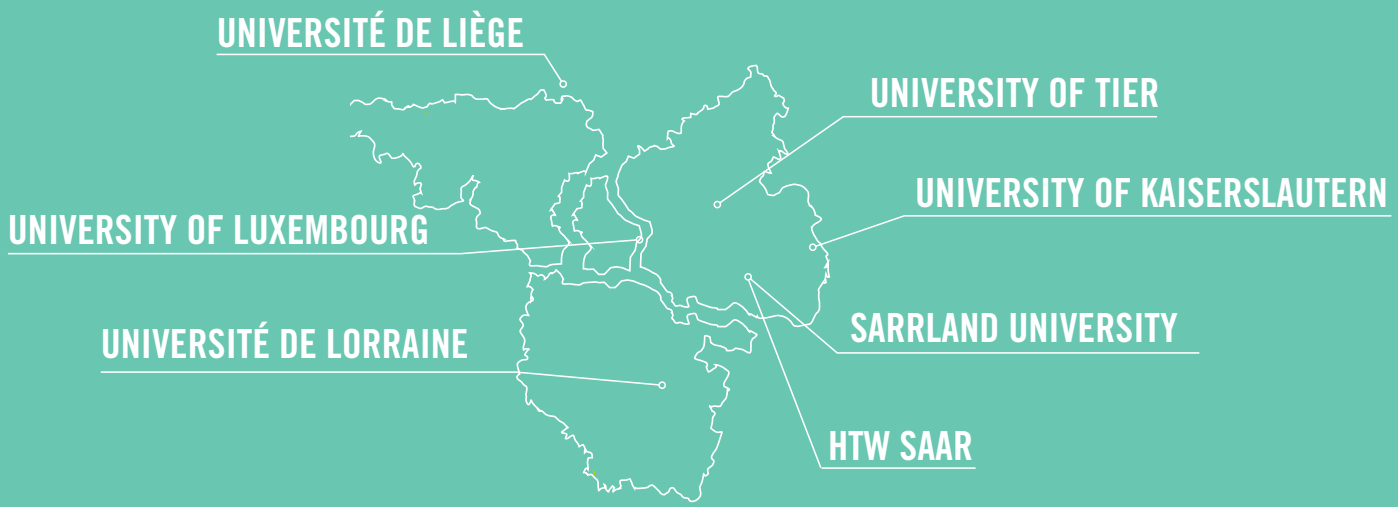
**7** UNIVERSITIES

**4** COUNTRIES

**152,500** STUDENTS

**30** CROSS-COUNTRY AT EVERY DEGREE LEVEL

**2** INTERDISCIPLINARY CENTERS OF EXPERTISE





# LORRAINE UNIVERSITY OF EXCELLENCE



**6** BIG CHALLENGES

related to the major transitions of the 21<sup>st</sup> century



**15** PROGRAMS



**€10,5 M** BUDGET



**47%** INFRASTRUCTURES

that have responded to the call for expression of interest  
has been labellized Infra + (42 sur 88)



**161** PUBLICATIONS

from LUE projects

# HEALTH CARE



**32,192** CONSULTATIONS  
all overall medical procedures



**10,446** HEALTH CHECKS



**1,075** PREVENTIVE MEDICAL CHEK-UPS  
for international students (from non EU countries)



**12,952** INTERVIEWS WITH SOCIAL SERVICES



**4,304** SOCIAL INTERVIEWS

# DISABILITY



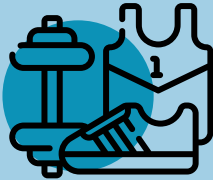
**1,250** STUDENTS HELPED  
by the Office for students with disabilities

**335** STUDENTS SUPPORTED  
by peer-to-peer learning (secretary, pair,  
reader-writer...)



**188** STUDENTS RECRUITED  
by the university for sharing notes

# SPORTS



**71** SPORT ACTIVITIES

available for students and academic and administrative staff



**4,200** SPORTS PRACTITIONERS

per week



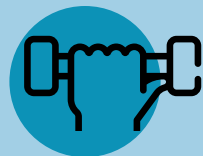
**245** PROFESSIONAL ATHLETE

students



**4** SPORT FACILITIES

including a pool



**12,000** HOURS OF CLASSES

per year

# CULTURE



**Discord**

**1,800** members



**2** MUSICAL STAGES  
AND REHEARSAL LOCATIONS  
for the associations



**17** WORKSHOPS  
MDE Lorraine South

ARTS & CULTURE  
IN HIGHER EDUCATION DAYS

**over 50** PROJETS  
on site and online



« MY THESIS IN 180 SECONDS »  
STREAMING

**1,800** VIEWS  
on the Youtube live

# CULTURE



**42**  
SHOWS  
PERFORMED

espace  
bernard-marie  
**koltès**  
écritures contemporaines direction artistique lee fou messica

**84**  
THEATRE  
PERFORMANCES

**38** COMPANIES RECEIVED

**7,400**  
SPECTATORS

**8** RECORDINGS AND UPLOADS  
of stage plays in Espace Bernard-Marie Koltès

**Arts and cultural education Actions**  
AT BERNARD-MARIE KOLTÈS SCENE :

**30** SCHOOL WORKSHOPS AND **14** COURSES OF STUDIES

**4,000** PUPILS RECEIVED

**9** SCHOOL PERFORMANCES in the schools

# UNIVERSITY LIBRARIES



**25**  
**LIBRARIES**  
open to everybody



**290,000**  
**LENDING BOOKS**  
or renewed



**1,700,000**  
**ENTRIES**



**33,000**  
**NEW E-BOOKS**



**100**  
**CULTURAL AND  
SCIENTIFIC EVENTS**  
this year



**1,300**  
**COURSES**  
on site or online



**29,000**  
**PEOPLE TRAINED**  
to documentary research



**6,000,000**  
**DOWNLOADS**  
articles, thesis and dissertations

# STUDENTS INITIATIVES

**169** ASSOCIATIONS WITH "ASSO UL" LABEL

**FSDIE** (Fonds de solidarité et de développement des initiatives étudiantes)



**127**

ASSOCIATIONS

have submitted an application



**€536,812** ALLOWED  
in respect of FSDIE



**320**

FUNDING  
APPLICATIONS



**16** FORMATIONS DAYS  
provided to the student  
associations managers



**320**

PROJETS supported



**1,176** "B2E" files  
(Student commitment bonus)



# FONDATION ID+ LORRAINE



**170** DONATIONS RECEIVED



**70** SPONSORS

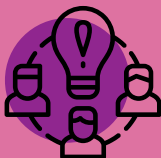


PLEDGED IN 2022 : **€1,404,930**



**41** PROJECTS FUNDED

including



**12** CHAIRES

# ORION



900

STUDENTS AND PHDS HAVE PARTICIPATED IN ORION PROGRAM  
IN 2022-2023



2,068

ATTENDANTS TO THE **29** ORION EVENTS



5

STUDENTS-RESEARCHERS CLUBS



48

SCHOLARS OF EXCELLENCE

# SIRIUS



8

## LORRAINE'S RESEARCH SCENE PARTNERS



1

PUBLIC INNOVATION  
LABORATORY :  
THE DEEP CHANGE LAB



1

CHANGE AMBASSADOR  
COMMUNITY



1

SPACE FOR INNOVATION'S FEDERATION  
WITH **10** OPENLABS IN LORRAINE



INRAE

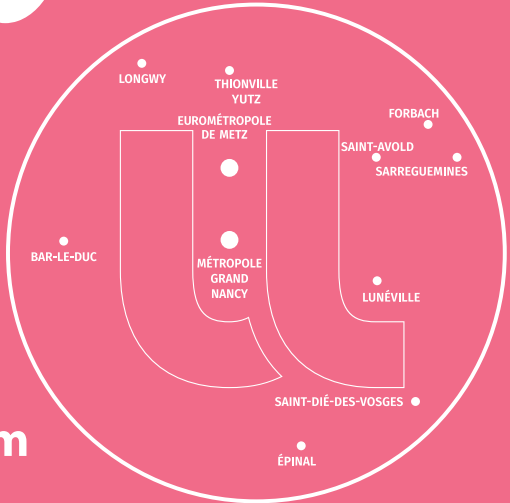
Inria

Inserm

Georgia Tech  
Europe



UNIVERSITÉ  
DE LORRAINE



RESPONSABILITY  
CREATIVITY  
REFLEXIVITY  
SOLIDARITY  
UNIVERSITY

univ-lorraine.fr



## Lorraine Coordination and Scientific Orientation Committee Sponsors



HR EXCELLENCE IN RESEARCH



UNIVERSITÉ DE LA  
GRANDE RÉGION  
UNIVERSITÄT DER  
GROSSREGION