

KEY FIGURES

2021 edition

62,000 students

spread over campuses located in
2 metropolises along with 10 towns
and cities



over **250** facilities



over **7,000** academic
and administrative staff



a budget around **€ 634 M**

Programs by enrolment



62,000
students

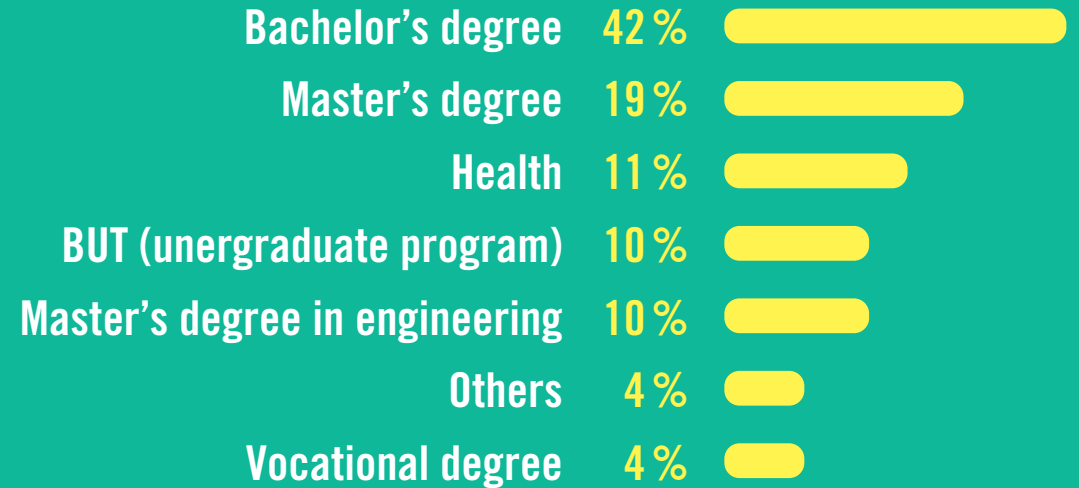
More than...

7,600 students in lifelong learning programs

330 enrolments for DAEU

over 2,800 apprentices

over 350 professionalisation contracts

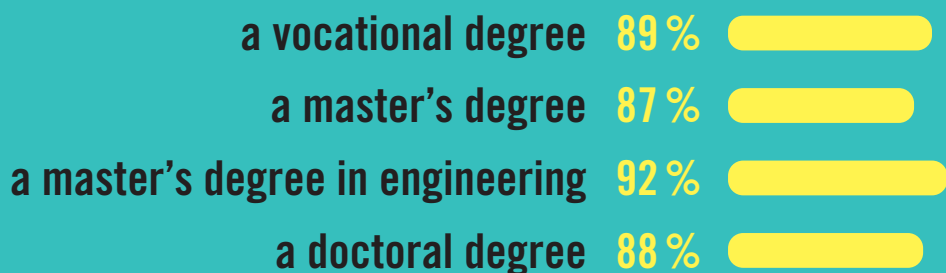


Professional insertion



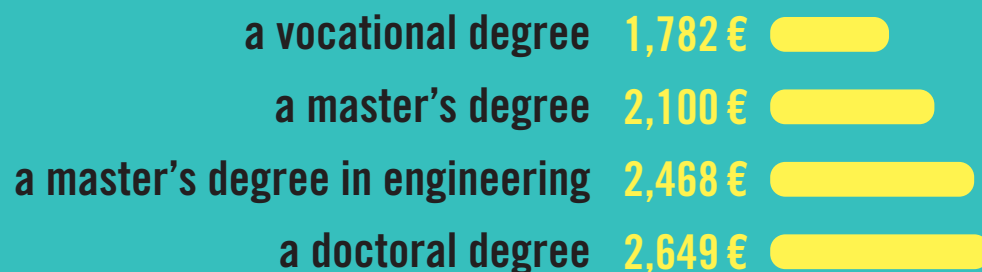
INSERTION RATE

after



AVERAGE MONTHLY SALARY

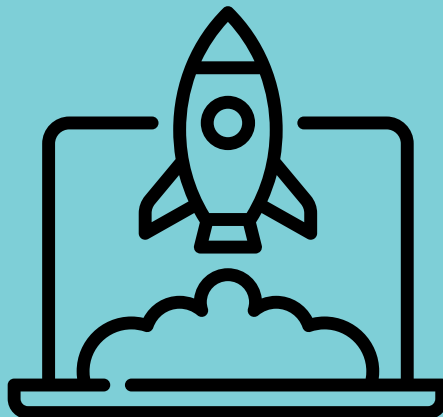
after



A university that promotes entrepreneurship

peel

Pôle Entrepreneuriat
étudiant de Lorraine



OVER **500**
students-entrepreneurs
assisted

1st UNIVERSITY
in France in terms of
entrepreneurship

3,807 STUDENTS
informed about and aware
of entrepreneurship

OVER **80** STUDENTS
have developed an activity
(business creation or
takeover, association...)

27 local, regional or
national **AWARDS WON**
for a total sum of over
€ 28,000

Research



4,000
ACADEMIC AND RESEARCH STAFF



Over **4,000**
NOUVELLES PUBLICATIONS



Over **1,900**
PHD STUDENTS



368 THESES defended including 45
joint Phds with partner universities



60 RESEARCH UNITS
including
28 JOINT UNITS



Over **170** PATENT FAMILIES



10 SCIENTIFIC CENTERS



58 BRANDS and **141** SOFTWARES



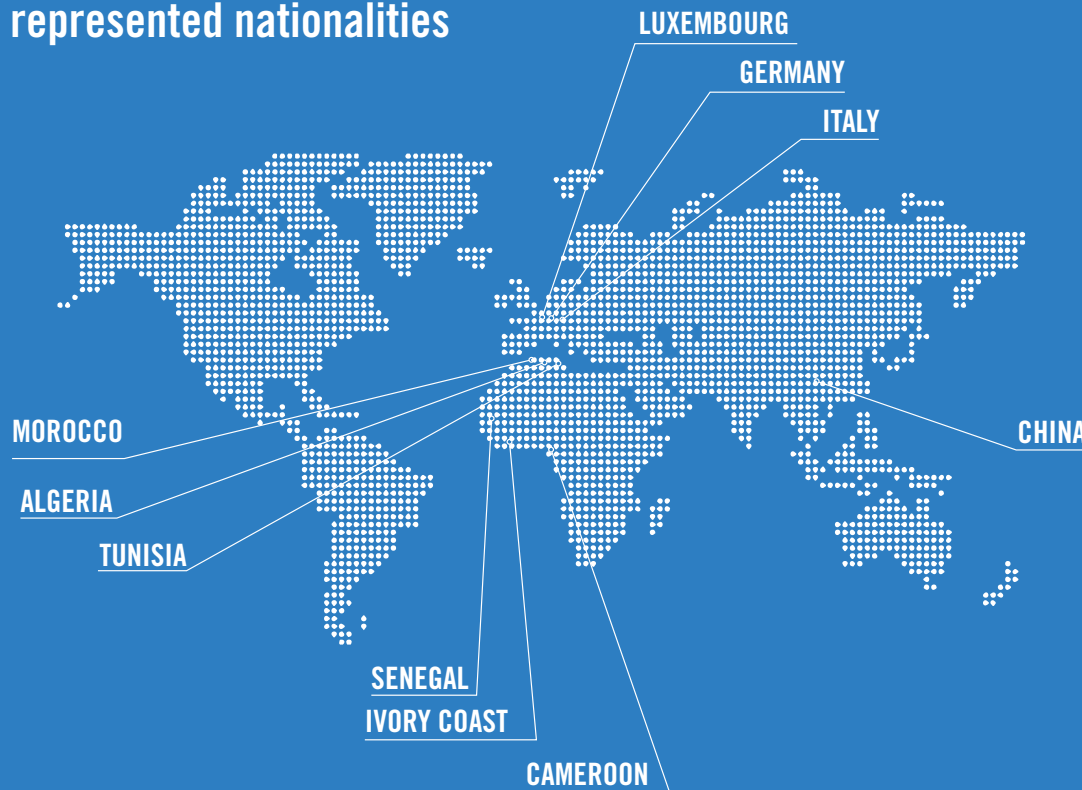
8 DOCTORAL SCHOOLS



8 START-UPS created in 2020

International

Top 10 represented nationalities



Over **10,000**
INTERNATIONAL STUDENTS (1 in 6)

Erasmus + mobility

8 outgoing PERSONNEL

806 outgoing STUDENTS

mobility outside the Erasmus program

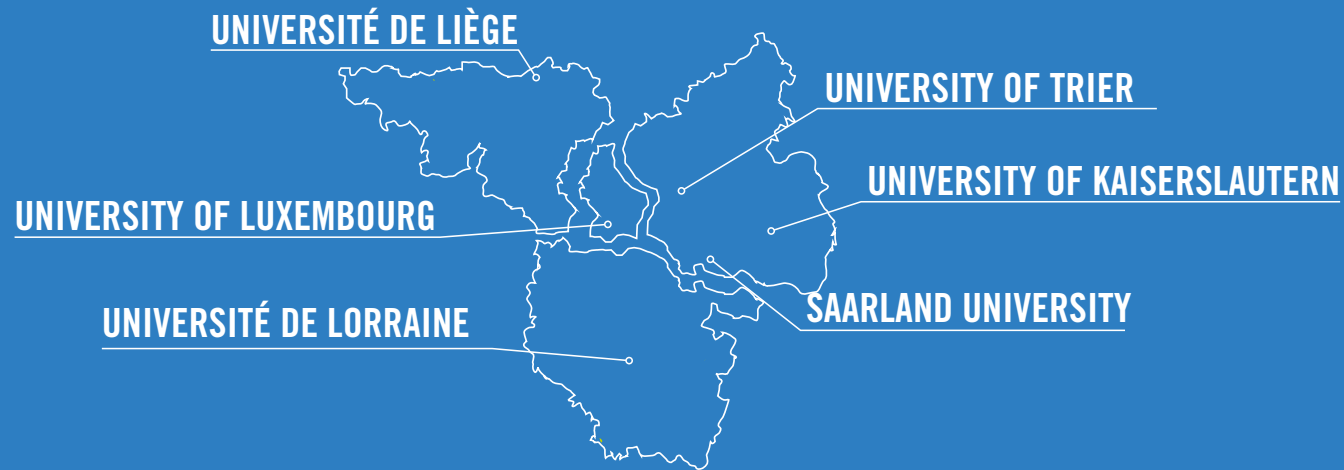
253 outgoing STUDENTS

46 % international PHD STUDENTS

450 RESEARCHERS welcomed by Euraxess services of Metz and Nancy

450 HOSTING AGREEMENTS

more than **3,500** RESIDENT PERMITS CASES (including **659** researchers)



7 UNIVERSITIES

4 COUNTRIES

141,000 STUDENTS

40 CROSS-COUNTRY COURSES AT EVERY DEGREE LEVEL

2 INTERDISCIPLINARY CENTRES OF EXPERTISE

Lorraine University of Excellence



15 PROGRAMS
enhancing UL's international
leadership on
6 socio-economics challenges



290 JOBS
CREATED



€ 37 M BUDGET



**INNOVATIVE PEDAGOGICAL
TOOLS**
(Créativ'Lab, remotes courses,
multi-disciplinary curricula,
MOOCs,...)



93 COMPONENTS
(formations, labos
and operational departments)

Health care

MANAGING HEALTH CRISIS AND PROVIDING PSYCHOLOGICAL SUPPORT HAVE BEEN A PRIORITY THIS YEAR

23,248 CONSULTATIONS
all overall medical procedures

3,311 PSYCHOLOGICAL
ASSISTANCE CONSULTATIONS

748 CONSULTATIONS ON
PRESCRIPTION
(89 licensed psychologists)



10,639 COVID-19 TESTS
from september 2020 to may 2021



2,191 HEALTH CHECKS



1,457 CONSULTATIONS OF STUDENTS
with disabilities



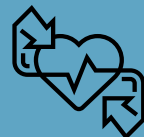
444 PREVENTIVE MEDICAL CHECK-UPS
for international students (from non EU countries)



2,747 INTERVIEWS WITH SOCIAL SERVICES



4,804 SOCIAL INTERVIEWS



194 PEOPLE TRAINED
in mental health first-aid

Handicap



Over **1,400** DISABLED STUDENTS
known by the University Health Service



892 STUDENTS HELPED
by the Office for students with disabilities



264 STUDENTS SUPPORTED
by peer-to-peer learning

113 STUDENTS RECRUITED
for sharing notes by Université de Lorraine



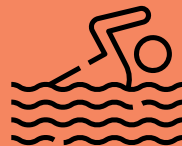
71 SPORT ACTIVITIES
available for students and academic
and administrative staff



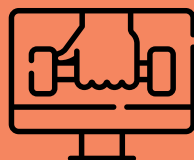
Over **6,000** SPORTS PRACTITIONERS
per week



223 PROFESIONNAL
ATHLETE STUDENTS



4 SPORT FACILITIES
including a pool



DAILY AND ONLINE MEETINGS :
fitness, dance, wellness



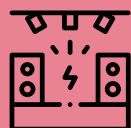
LAUNCH OF A **Twitch** CHANNEL
22h42 streaming



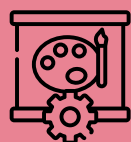
LAUNCH OF A **Discord** SERVER
472 members and 28 entertainment evenings



30 AUDIOVISUAL PRODUCTIONS
(film society)



2 MUSIC SCENES AND
REHEARSAL ROOMS



90 WORKSHOPS
face-to-face and distance learning



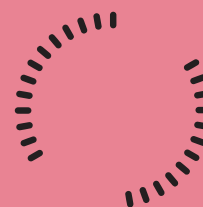
19 LIVESTREAMS
(partnership with MDE Lorraine Nord -
Viàmoselle TV and Cité musicale-Metz)

ARTS & CULTURE IN HIGHER
EDUCATION ONLINE DAYS

1 WEEK programming

20 ONLINE EVENTS

(including **8** Twitch livestream)



« MY THESIS IN 180 SECONDS »
STREAMING

4,270 VIEWS
on the YouTube live

35 EXHIBITION OUTINGS
in the Grand Est with
Escales des Sciences

The « 12:12 »
YOUR CULTURAL INTERMISSION
IN UL :
40 online meetings

24 VIDEOCONFERENCES
of Université du Temps Libre

espace
bernard-marie
koltès
écritures contemporaines direction artistique lee fou messica

1ST EDITION OF KOLTES AWARD - « PROLONG THE GESTURE »

149 TEXTS RECEIVED

12 RECORDING AND UPLOADS
of stage plays in the Espace Bernard-Marie Koltès

EAC Actions IN THE ESPACE BERNARD-MARIE KOLTÈS :

12 SCHOOL WORKSHOPS

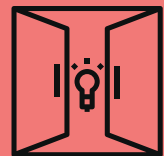
6 PUPILS/COMEDIANS MEETINGS in the classrooms

6 SCHOOL PERFORMANCES in the schools

University libraries



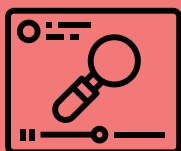
25 LIBRARIES OPEN
during the lockdown
of 2020



800,000 VISITS



70 CULTURAL AND
SCIENTIFIC EVENTS



18,000 PEOPLE TRAINED
to documentary research
and training



220,000 BOOKS LENT
OR RENEWED



26,000 NEW E-BOOKS



4,4 M
ARTICLES, THESIS
AND DISSERTATIONS
DOWNLOADED

Students initiatives

167 ASSOCIATIONS WITH « ASSO UL » LABEL

FSDIE



97 ASSOCIATIONS
have submitted an application



193,183 € ALLOWED
in respect of FSDIE



218 FUNDING
APPLICATIONS



20 FORMATION DAYS
provided to the student
associations managers



172 PROJECTS supported



905 B2E FILES
(Commitment student bonus)

Foundation



223 DONATIONS RECEIVED

(**110** from private individuals and **62** from companies and local authorities)



PLEDGES IN 2020 : **1,033,473 €**

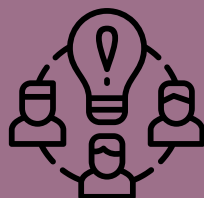


5 YEARS SPONSORSHIPS : **3,800,000 €**



20 NEW SPONSORS

29 PROJECTS FUNDED



9 ACTIVE INDUSTRIAL CHAIRS

3 UPCOMING CHAIRS



Responsibility

Reflexivity

Creativity

Solidarity

University

univ-lorraine.fr



Lorraine Coordination and Scientific Orientation Committee Sponsors



